



CATALOG IT & SOHO



Wireless Router



UPS



Webcam



SOHO Switch



AIDC



TABLE OF

CONTENTS

01	Wireless Router	01
02	Hikvision SOHO switch	05
03	AIDC	09
04	UPS	17
05	Webcam & Video conference	20

Hikvision Wireless Router



Excellent Wall Penetration



Easy Setup with Mobile Web



Eliminate Latency with MU-MIMO



Products Spotlights



4G Wireless Router

DS-3WR4G12C - AC1200M 4G Cat 4 Router



Wireless Standard
IEEE 802.11/a/b/g/n/ac



Data Rate
2.4 GHz: 300 Mbps
5 GHz: 867 Mbps



Antennat
2 high gain antennas



Interface
2 × 10/100 Mbps LAN ports



Wi-Fi 5 Wireless Router

DS-3WR12GC - WiFi 5 AC 1200 Dual Band Gigabit Router



Dual-band
Auto switch between 2.4 & 5 GHz signals



5-dBI amplified antennas
Highly sensitive omnidirectional antennas



Beamforming optimizes signal
Adjust waveform to aggregate beams to users' directions



Full Gigabit Ports
4 Gigabit Ethernet ports to takefull advantage of your broadband



Wi-Fi 6 Wireless Router

DS-3WR15X - WiFi 6 AX 1500 Dual Band Gigabit Router



WiFi speed up to 1.5 Gbps
All gigabit ports, meet high-speed fiber needs



Dual Band in One
Dual-frequency integration, automatically select the optimal frequency band



Convenient management
Remote management: Hik-Connect



Beamforming
Adjust waveform to aggregate beams to users' direction



MU-MIMO Technology
Multiple users can use different spatial steams at the same time to improve throughput

Excellent Wall Penetration



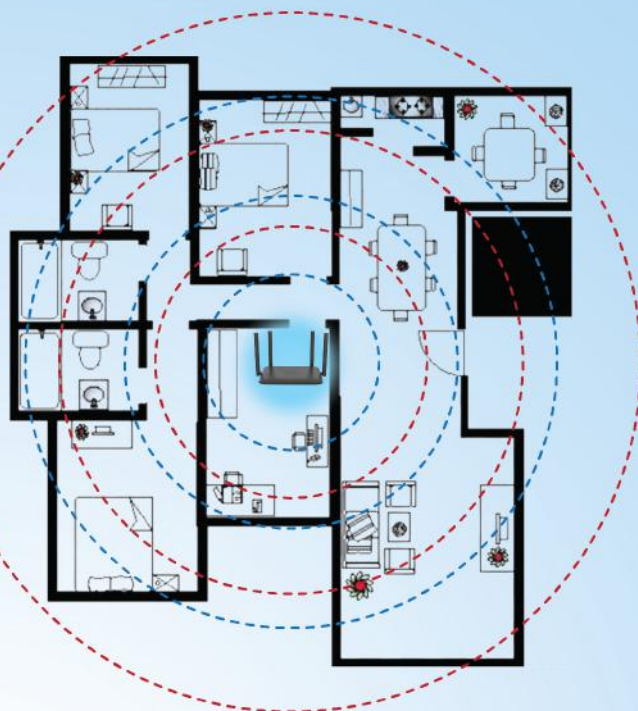
Four 5 dBI high gain omnidirectional antenna design to strengthen signal and extend coverage



Internet access is still normal even when the signal goes through 3 walls, meeting requirements of 120 m² large buildings.

----- 5G

----- 2.4G



Easy Setup with Mobile Web

Preparation

3 Steps Quick set up



Connect your mobile to the Router Wi-Fi



Auto redirect to the activation page



Eliminate Latency with MU-MIMO

- Normal router allows only single terminal communication, and multiple terminals need to be queued for transmission
- MIMO (Multi-User Multiple-Input Multiple-Output) router allows multiple terminals to communicate at the same time without queuing, making it more fluent for multi-user internet connection.

Traditional Router



SU-MIMO

Communicate with only 1 device at a time

Hikvision Router



MU-MIMO

Simultaneous communication with multiple devices



DS-3WR3N 300M Wireless Router

DS-3WR3N is a wireless router designed by Hikvision. With IEEE802.11n wireless standard and the wireless speed up to 300 Mbps, it is perfect for such activities as email, chat, streaming videos and online gaming. DS3WR3N can also be used as a client router to connect ISP network wirelessly or uplink AP to share the internet to every corner. Equipped with amplified antennas for extra coverage to eliminate dead zones

- 5-dBi external antennas
- Dual antennas for maximum coverage
- Supports IPTV

570.000



DS-3WR12C 300M Wireless Router

DS-3WR12C is a dual band Wi-Fi router designed by Hikvision. You can easily deploy, monitor and expand your home Wi-Fi network anytime and anywhere. DS3WR12C comes equipped with dual band coverage, which can offer a smooth online game and 4K video experience. Powered with beamforming technology, DS-3WR12C ensures excellent high-speed Wi-Fi coverage in every corner at home.

- Four 5-dBi external antennas
- Beamforming optimizes signal
- Dual band – Smart signal switching
- Broadband account synchronization

880.000



DS-3WR12GC 1200M Dual Band Wi-Fi Router

DS-3WR12GC is a dual band Wi-Fi router designed by Hikvision. You can easily deploy, monitor and expand your home Wi-Fi network anytime and anywhere. DS3WR12GC comes equipped with dual band coverage, which can offer a smooth online game and 4K video experience. Powered with beamforming technology, DS3WR12GC ensures excellent high-speed Wi-Fi coverage in every corner at home.

- 4 x 5dBi external dual band antennas
- Beamforming optimizes signal
- Dual band – Smart signal switching
- Broadband account synchronization

1.080.000



DS-3WR4G12C 1200Mbps 4G LTE4 Router

DS-3WR4G12C is a wireless gateway that integrates LTE and high-speed Ethernet uplink access, which provides users with flexible and diversified data access. DS-3WR4G12C offers a concurrent dual band data rate of as high as 1167 Mbps.

- AC1200 Dual-band Wi-Fi
- 4G Boost Faster Speed
- Instantly Access a Mobile Network With a SIM Card

2.192.000



DS-3WR15X 1500Mbps Wi-Fi 6 Router

- 1500Mbps Wi-Fi 6
- Wired Wireless Dual Gigabit
- Dual Band in One and 5G First
- APP Management

1.750.000



Hikvision SOHO Switch



Self-adaptive
10/100/1000 Mbps



Plug and Play
No configuration



Silent operation
Fanless design



Various mounting ways
Desk/wall mounting



Hikvision's Switch - Plastic casing



DS-3E0505D-E

10/100/1000 Mbps Ethernet Switch

DS-3E0505D-E provides 5 × 10/100/1000 Mbps Ethernet ports which support line speed forwarding. With simple and mini exquisite body, the switch is plug and play and easy to use, suitable for home, school, dormitory, office, small monitoring and other simple network environments.

- DS-3E0505D-E: 5 × 10/100/1000 Mbps adaptive Ethernet ports
- Support ADI/ADIX
- Store-and-forward switching
- Support MAC address auto-learning and aging
- Simple and mini exquisite body
- Support desktop and wall-mounting
- Plug & play, and easy to use

480.000



DS-3E0508D-E

10/100/1000 Mbps Ethernet Switch

DS-3E0508D-E provides 8 × 10/100/1000 Mbps Ethernet ports which support line speed forwarding. With simple and mini exquisite body, the switch is plug and play and easy to use, suitable for home, school, dormitory, office, small monitoring and other simple network environments.

- DS-3E0508D-E: 8 × 10/100/1000 Mbps adaptive Ethernet ports
- Support ADI/ADIX
- Store-and-forward switching
- Support MAC address auto-learning and aging
- Simple and mini exquisite body
- Support desktop and wall-mounting
- Plug & play, and easy to use

820.000



DS-3E0105D-E

10/100 Mbps Ethernet Switch

DS-3E0105D-E provides 5 × 10/100 Mbps Ethernet ports which support line speed forwarding. With simple and mini exquisite body, the switch is plug and play and easy to use, suitable for home, school, dormitory, office, small monitoring and other simple network environments.

- DS-3E0105D-E: 5 × 10/100 Mbps adaptive Ethernet ports
- Support ADI/ADIX
- Store-and-forward switching
- Support MAC address auto-learning and aging
- Simple and mini exquisite body
- Support desktop and wall-mounting
- Plug & play, and easy to use

257.000



DS-3E0108D-E

10/100 Mbps Ethernet Switch

DS-3E0108D-E provides 8 × 10/100 Mbps Ethernet ports which support line speed forwarding. With simple and mini exquisite body, the switch is plug and play and easy to use, suitable for home, school, dormitory, office, small monitoring and other simple network environments

- DS-3E0108D-E: 8 × 10/100 Mbps adaptive Ethernet ports
- Support ADI/ADIX
- Store-and-forward switching
- Support MAC address auto-learning and aging
- Simple and mini exquisite body
- Support desktop and wall-mounting
- Plug & play, and easy to use

320.000



DS-3E0505D-O

5-Port Gigabit Plastic Switch

DS-3E0505D-O provides 5×10/100/1000 Mbps Ethernet ports which support line speed forwarding. With simple and mini exquisite body, the switch is plug and play and easy to use, suitable for home, school, dormitory, office, small monitoring and other simple network environments.

- 5 × 10/100/1000 Mbps ethernet ports
- Supports ADI/ADIX.
- Store-and-forward switching
- Supports MAC address auto-learning and aging.
- Simple, compact body design
- Supports desktop and wall-mounting.
- Plug&play, easy to use

480.000



DS-3E0508D-O

8-Port Gigabit Plastic Switch

DS-3E0508D-O provides 8×10/100/1000 Mbps Ethernet ports which support line speed forwarding. With simple and mini exquisite body, the switch is plug and play and easy to use, suitable for home, school, dormitory, office, small monitoring and other simple network environments.

- 8 × 10/100/1000 Mbps ethernet ports
- Supports ADI/ADIX.
- Store-and-forward switching
- Supports MAC address auto-learning and aging.
- Simple, compact body design
- Supports desktop and wall-mounting.
- Plug&play, easy to use

820.000



Hikvision's Switch – Plastic casing



DS-3E0105D-O

5-Port Fast Ethernet Plastic Switch

DS-3E0105D-O provides 5x10/100 Mbps Ethernet ports which support line speed forwarding. With simple and mini exquisite body, the switch is plug and play and easy to use, suitable for home, school, dormitory, office, small monitoring and other simple network environments.

- 5 x 10/100 Mbps ethernet ports
- Supports ADI/ADIX
- Store-and-forward switching
- Supports MAC address auto-learning and aging
- Simple, compact body design
- Supports desktop and wall-mounting installation
- Plug & play, easy to use

257.000



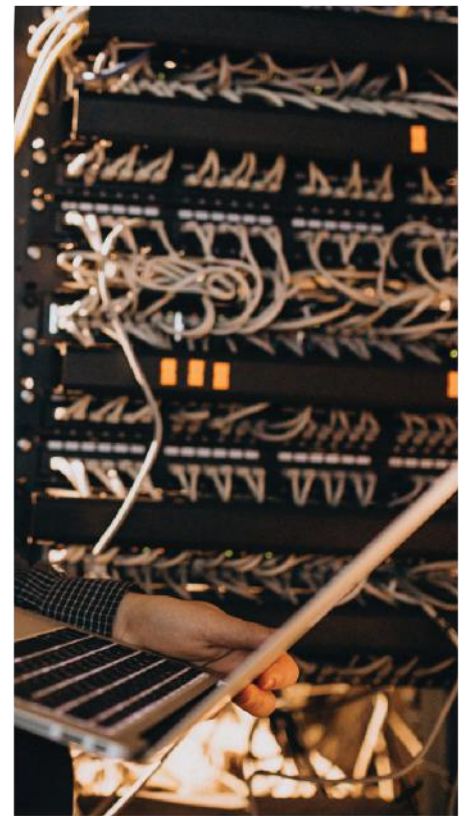
DS-3E0108D-O

8-Port Fast Ethernet Plastic Switch

DS-3E0108D-O provides 8 x 10/100 Mbps Ethernet ports which support line speed forwarding. With simple and mini exquisite body, the switch is plug and play and easy to use, suitable for home, school, dormitory, office, small monitoring and other simple network environments.

- 8 x 10/100 Mbps ethernet ports
- Supports ADI/ADIX
- Store-and-forward switching
- Supports MAC address auto-learning and aging
- Simple, compact body design
- Supports desktop and wall-mounting installation
- Plug & play, easy to use

330.000



Hikvision's Switch – Metal casing



DS-3E0505-E

5 Port Gigabit Unmanaged Switch

- 5 x 1000 M Ethernet ports
- Supports IEEE 802.3, IEEE 802.3u and IEEE 802.3x
- 1000 M network access
- Wire-speed forwarding and non-blocking design
- Store-and-forward switching
- Solid high-strength metal shell
- Fan-free design with high reliability

630.000



DS-3E0508-E(B)

8 Port Gigabit Unmanaged Switch

- 8 x 1000 M Ethernet ports
- Supports IEEE 802.3, IEEE 802.3u and IEEE 802.3x.
- 1000 M network access
- Wire-speed forwarding and non-blocking design
- Store-and-forward switching
- Solid high-strength metal shell
- Fan-free design with high reliability

1.040.000



DS-3E0516-E(B)

16 Port Gigabit Unmanaged Switch

- 16 x 1000 M Ethernet ports
- Supports IEEE 802.3, IEEE 802.3u and IEEE 802.3x
- 1000 M network access
- Wire-speed forwarding and non-blocking design
- Store-and-forward switching
- Solid high-strength metal shell
- Fan-free design with high reliability

2.280.000



Hikvision's Switch



DS-3E0524-E(B)

24 Port Gigabit Unmanaged Switch

- 24 x 1000 M Ethernet ports
- Supports IEEE 802.3, IEEE 802.3u and IEEE 802.3x
- 1000 M network access
- Wire-speed forwarding and non-blocking design
- Store-and-forward switching
- Solid high-strength metal shell
- Fan-free design with high reliability

3.140.000



DS-3E0508P-O

Gigabit PoE Switch

- Gigabit PoE and non-PoE ports for multiple use
- Plug-and-play with easy connection
- Built to last with a rugged metal case
- Desktop/Wall-mounted installation available for any work environment

2.250.000



DS-3E0105-O

5-Port Fast Ethernet Switch

- 5 x 10/100 M Adaptive RJ45 Ports
- Easy Plug-and-Play Installation
- Desk- Mounting and Wall-Mounting
- Rugged Metal Case, Exquisite and Beautiful Design

570.000



DS-3E0108-O

8-Port Fast Ethernet Switch

- 8 x 10/100 M Adaptive RJ45 Ports
- Easy Plug-and-Play Installation
- Desk-Mounting and Wall-Mounting
- Rugged Metal Case, Exquisite and Beautiful Design

880.000



DS-3E0116R-O

16-Port Fast Ethernet Switch

- 16 x 10/100 M Adaptive RJ45 Ports
- Easy Plug-and-Play Installation
- Desk or rack installation and wall-mounting
- Rugged Metal Case

1.690.000



HIKVISION®

Hikvision Enterprise AIDC

Digital mobility for industrial professionals



Hikvision's Enterprise

Personal Digital Assistants

(PDAs) are a series of portable terminals designed for professional use with:

- A built-in barcode-scan engine
- Optical Character Recognition (OCR) technology
- Advanced deep learning barcode-recognition algorithms

With these features, enterprise PDAs can efficiently read regular barcodes and accurately identify abnormal barcodes caused by factors like wrinkles or ink overflow. This makes them highly suitable for various industries from manufacturing to retail chains.

What's more, as a handheld intelligent data terminal, our PDA offers the advantage of independent operation without the need for a computer connection. It provides users with unparalleled convenience and freedom from location restrictions, greatly boosting working efficiency.



Accuracy
Flexibility
Convenience



Latest Product Portfolio at Your Service



Short keyboard enterprise PDAs

Terminals equipped with an ergonomic physical keypad and side buttons



Full-screen enterprise PDAs

Terminals featuring a full-screen display and an intuitive user interface

Long handle enterprise PDAs

Terminals equipped with 42 physical buttons, high-capacity and hot-swappable battery



PAD enterprise PDAs

The 10.1" robust tablet strikes perfect balance between size and performance



Core Technologies

1/ Excellent image processing and code reading

With years of research and development in image technology, Hikvision has developed its own scanner that incorporates outstanding image recognition technology and deep learning algorithms. This self-developed scanner guarantees efficient and accurate code scanning, recognition, and analysis capabilities.



Excellent image recognition

Integration of camera and supplement light systems
Scan the code anytime, anywhere even without light and network



High recognition speed

Continuous code scanning - 25 times / second

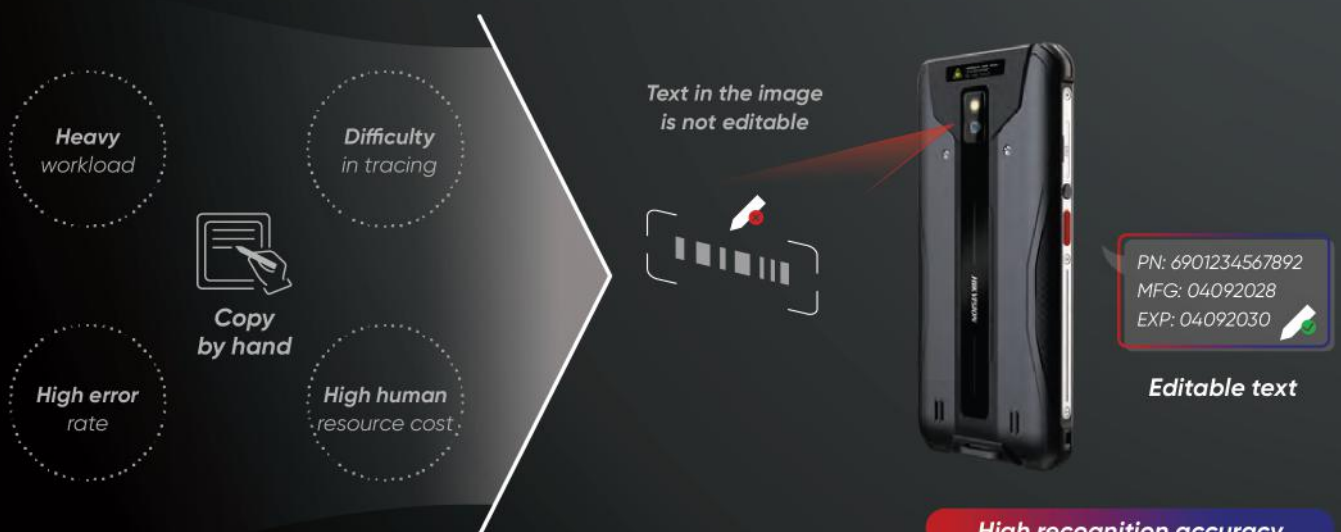


Accurate recognition & analysis

Recognize more than 30 types of common 1D/2D codes

2/ OCR technology for fluid scanning experience

Our **Optical Character Recognition (OCR)** technology, powered by industry-leading deep learning algorithm, contributes to enhanced scanning and registration efficiency with reduced manpower. It conveniently converts text content from images or pictures to editable text, with high recognition accuracy, fast recognition speed, and multiple recognition patterns.



Optimized workflow & reduced cost

High recognition accuracy

Fast recognition speed

Multiple recognition patterns

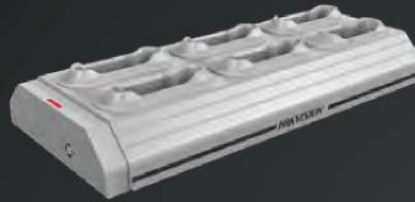
Rapid customization

Accessories



DS-MH1430 for MDT201

Single charging home base
Charges one terminal



DS-MH1420 for MDT201/MDT301

Docking station with six bays



DS-MH1431 for MDT301

Single charging home base
Charges one terminal and one
Replaceable battery



DS-MH1620

Scan handle

Software

Our powerful **Mobile Device Management** (MDM) software is a free device management software based on the Windows operating system. With our MDM software, you can efficiently manage your PDA terminals, ensuring optimal performance and security while simplifying your day-to-day operations.

Manage devices in batches remotely

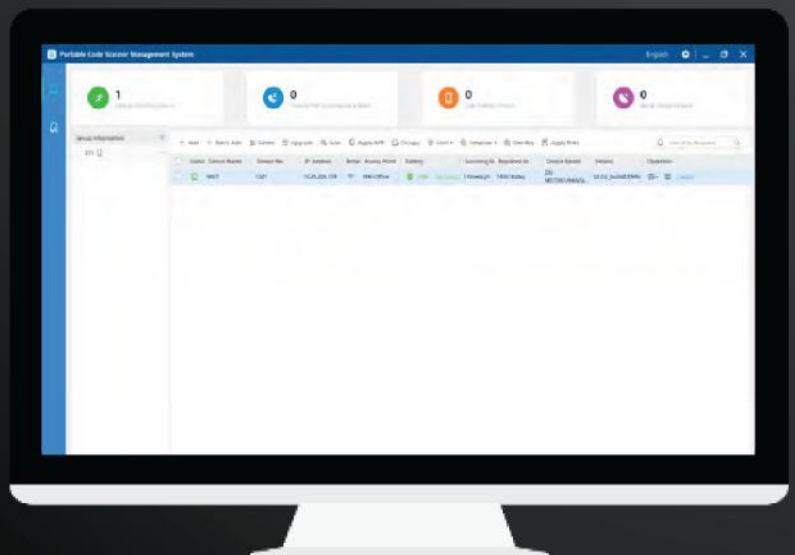
- Install / upgrade software remotely
- Remotely uninstall specified software from a device
- Device power status display
- Check the number of code scanning times of the device at any time
- Set the code scanning configuration of the device

Permission setting

- TF card permission
- Wi-Fi permission
- NFC permission
- Camera permission
- USB permission

Remote maintenance

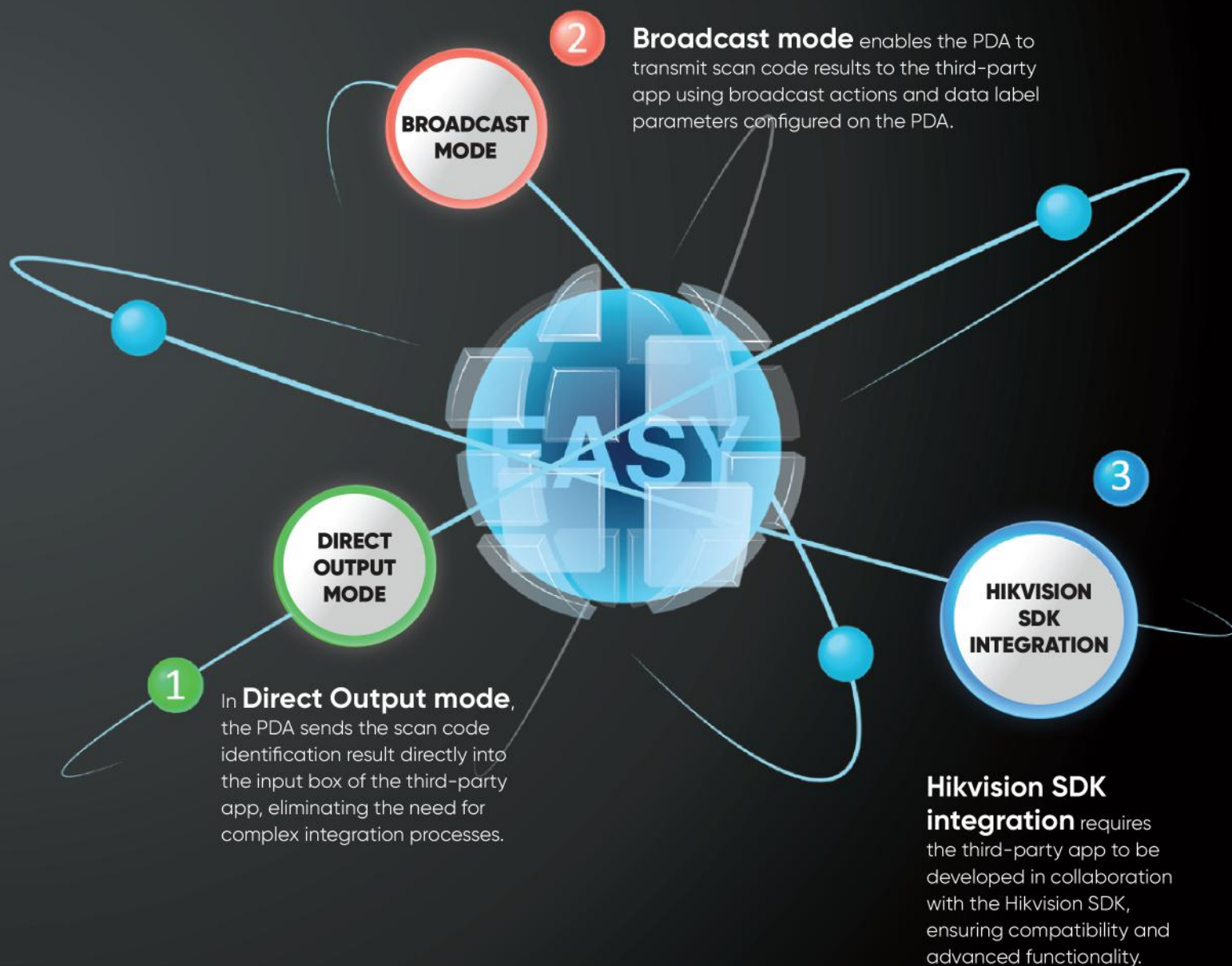
- Remotely obtain device running logs for maintenance
- Find devices remotely to prevent loss



Easy

Third-party Integration

Our PDAs seamlessly integrate with third-party applications through three docking modes: Direct Output, Broadcast, and Hikvision SDK. With these flexible integration options, our PDAs provide enhanced compatibility, versatility, and a seamless user experience, enabling efficient interactions with a wide range of third-party apps.





DS-MDT200/3&64/GLE

Professional Small full Screen PDA

- Processor: 8cores,2.0GHz
- Memory: 3GB RAM, 64GB ROM
- Weight:200g
- Display:5 inch, 720*1520 ,IPS; Capacitive touch panel; multi-touch
- Notification:Vibration, speaker and multi-color LEDs
- Camera: FC 2MP, RC 8MP
- Expansion: 1TF card (Max. 256 GB)
- Operating Temperature: -15°C~+55°C
- Storage Temperature : -30°C to 60°C
- Humidity: 95%
- Drop Specifications : 1.5m.
- Sealing:IP68
- Cellular Network : WCDMA B1/B8
- FDD -LTE: B1/B3/B5/B8/B20/B28
- TDD -LTE: B34/B38/B39/B40/B41
- Wi-Fi Protocol : 802.11 a/b/g/n/ac
- Bluetooth : BT5.0
- Positioning Mode : GPS, BeiDou, Glonass
- NFC : NO

LIÊN HỆ



DS-MDT201/64G/GLE

Professional Small full Screen PDA

- Processor: 8cores,2.0GHz
- Memory: 4GB RAM, 64GB ROM; Weight:240g
- Display:5.5 inch, 720*1440 ,IPS; Capacitive touch panel; multi-touch
- Notification:Vibration, speaker and multi-color LEDs
- Camera: FC 5MP, RC 13MP
- Expansion: 1TF card (Max. 256 GB)
- Operating Temperature: -15°C ~ +55°C
- Storage Temperature : -30 °C to 60 °C
- Humidity: 95% ; Drop Specifications : 1.5m.
- Sealing:IP68 ; Cellular Network : WCDMA B1/B8
- FDD -LTE: B1/B3/B5/B8/B20/B28
- TDD -LTE: B34/B38/B39/B40/B41
- Wi-Fi Protocol : 802.11 a/b/g/n/ac
- Bluetooth : BT5.0
- Positioning Mode : GPS, BeiDou, Glonass
- NFC : Working Frequency: 13.56 MHzProtocol
- Standard: ISO14443A/B, ISO15693, NFC-IP1, NFC-IP2, etc.Label Standard: M1 card (S50, S70), CPU card, NFC label, etc.

LIÊN HỆ



DS-MDT201/4&64G/GLE/AI

Professional Small full Screen PDA

- Processor: 8cores,2.0GHz
- Memory: 4GB RAM, 64GB ROM; Weight:240g
- Display:5.5 inch, 720*1440 ,IPS; Capacitive touch panel; multi-touch
- Notification:Vibration, speaker and multi-color LEDs
- Camera: FC 5MP, RC 13MP
- Expansion: 1TF card (Max. 256 GB)
- Operating Temperature: -15°C ~ +55°C
- Storage Temperature : -30 °C to 60 °C
- Humidity: 95% ; Drop Specifications : 1.5m.
- Sealing:IP68 ; Cellular Network : WCDMA B1/B8
- FDD -LTE: B1/B3/B5/B8/B20/B28
- TDD -LTE: B34/B38/B39/B40/B41
- Wi-Fi Protocol : 802.11 a/b/g/n/ac
- Bluetooth : BT5.0
- Positioning Mode : GPS, BeiDou, Glonass
- NFC : Working Frequency: 13.56 MHzProtocol
- Standard: ISO14443A/B, ISO15693, NFC-IP1, NFC-IP2, etc.Label Standard: M1 card (S50, S70), CPU card, NFC label, etc.

LIÊN HỆ



DS-MDT301/3&64/GLE

Professional Short keyboard PDA

- Processor: 8cores,2.0GHz
- Memory: 4GB RAM, 64GB ROM
- Weight:280g
- Display:4 inch, 800 * 480 ,IPS; Capacitive touch panel; multi-touch
- Notification:Vibration, speaker and multi-color LEDs
- Camera: FC 2MP, RC 5MP
- Expansion: 1TF card (Max. 256 GB), 3 Virtual keys+24
- Physical Keypad: keyboard+3 Side keys
- Operating Temperature: -15°C ~ +55°C
- Storage Temperature:-30 °C to 60 °C
- Humidity: 95%; Drop Specifications:1.5m.
- Sealing:IP65; Cellular Network: WCDMA B1/B8
- FDD -LTE: B1/B3/B5/B8/B20/B28
- TDD -LTE: B34/B38/B39/B40/B41
- Wi-Fi Protocol: 802.11 a/b/g/n/ac
- Bluetooth: BT5.0
- Positioning Mode : GPS, BeiDou, Glonass
- NFC : Working Frequency: 13.56 MHzProtocol
- Standard: ISO14443A/B, ISO15693, NFC-IP1, NFC-IP2, etc.Label Standard: M1 card (S50, S70), CPU card, NFC label, etc.

LIÊN HỆ



DS-MDT401/4&64/GLE

Professional Short keyboard PDA

- Processor: 8cores,1.8GHz
- Memory: 4GB RAM, 64GB ROM
- Weight:400g
- Display:5.5 inch, 720*1440 ,IPS; Capacitive touch panel; multi-touch
- Notification:Vibration, speaker and multi-color LEDs
- Camera: FC 5MP, RC 13MP
- Expansion: 1TF card (Max. 256 GB)
- Operating Temperature: -15°C ~ +55°C
- Storage Temperature : -30 °C to 60 °C
- Humidity: 95%
- Cellular Network : WCDMA B1/B8
- FDD -LTE: B1/B3/B5/B8/B20/B28
- TDD -LTE: B34/B38/B39/B40/B41
- Wi-Fi Protocol : 802.11 a/b/g/n/ac
- Bluetooth : BT5.0
- Positioning Mode : GPS, BeiDou, Glonass
- NFC: Supports up to 58mm paper width
- Maximum print speed 70mm/s
- maximum roll diameter 30mm

LIÊN HỆ



DS-MDT501/4&64/GLE

Professional long keyboard PDA

- Processor: 8cores,2.0GHz
- Memory: 4GB RAM, 64GB ROM
- Weight:430g
- Display:4 inch, 800 * 480 ,IPS; Capacitive touch panel; multi-touch
- Notification:Vibration, speaker and multi-color LEDs
- Camera: FC 5MP, RC 13MP
- Expansion: 1TF card (Max. 256 GB)
- Keypad:3 Virtual keys+37 Physical keyboard +3 Side keys
- Operating Temperature: -15°C~+55°C
- Storage Temperature : -30 °C to 60 °C
- Humidity: 95%; Drop Specifications : 1.5m.
- Sealing:IP67; Cellular Network : WCDMA B1/B8
- FDD -LTE: B1/B3/B5/B8/B20/B28
- TDD -LTE: B34/B38/B39/B40/B41
- Wi-Fi Protocol : 802.11 a/b/g/n/ac
- Bluetooth : BT5.0
- Positioning Mode : GPS, BeiDou, Glonass
- NFC : Working Frequency: 13.56 MHzProtocol
- Standard: ISO14443A/B, ISO15693, NFC-IP1, NFC-IP2, etc.Label Standard: M1 card (S50, S70), CPU card, NFC label, etc.

LIÊN HỆ



DS-MDT501/4&64/GLE/DPM

DPM Industry PDA

- Processor: 8cores,2.0GHz
- Memory: 4GB RAM, 64GB ROM
- Weight:430g
- Display:4 inch, 800 * 480 ,IPS; Capacitive touch panel; multi-touch
- Notification:Vibration, speaker and multi-color LEDs
- Camera: FC 5MP, RC 13MP
- Expansion: 1TF card (Max. 256 GB)
- Keypad:3 Virtual keys+37 Physical keyboard +3 Side keys
- Operating Temperature: -15°C~+55°C
- Storage Temperature : -30 °C to 60 °C
- Humidity: 95%; Drop Specifications : 1.5m.
- Sealing:IP67; Cellular Network : WCDMA B1/B8
- Wi-Fi Protocol : 802.11 a/b/g/n/ac
- Bluetooth : BT5.0
- Positioning Mode : GPS, BeiDou, Glonass
- NFC : Working Frequency: 13.56 MHzProtocol

LIÊN HỆ



DS-MDP004/4&64/GLE

Rugged Industrial PAD

- Processor: 8cores,1.8GHz
- Memory: 4GB RAM, 64GB ROM
- Weight:950g
- Display:10 inch, 1920*1200 ,IPS; Capacitive touch panel; multi-touch
- Notification:Vibration, speaker and multi-color LEDs
- Camera: FC 5MP, RC 13MP
- Expansion: 1TF card (Max. 256 GB)
- Operating Temperature: -15°C~+55°C
- Storage Temperature : -30 °C to 60 °C
- Humidity: 95%
- Drop Specifications : 1.2m.
- Sealing:IP67
- Cellular Network : WCDMA B1/B8
- Wi-Fi Protocol : 802.11 a/b/g/n/ac
- Bluetooth : BT5.0
- Positioning Mode : GPS, BeiDou, Glonass
- NFC : Working Frequency: 13.56 MHzProtocol

LIÊN HỆ



DS-MSH100/13RF/05S/W1

Industrial Barcode Scanner

- Core processor: NPU+CPU
- Sensor GMOS Resolution 640*480
- Supplementary light & Aiming: White LED+ Orange LED Aiming
- Code type: Mainstream 1D&2D Code , Others Can be Customized
- Minimum reading accuracy: 4mil
- Reading distance :Code39 (5 mil) 50-100mm
- Code128 (10 mil) 30-240mm
- EAN13 (13 mil) 30-240mm
- Data Matrix (10 mil) 40- 130mm
- QR Code(15 mil) 15-205mm
- Interface and Protocol: USB & Serial
- Smart SDK, USB (HID,CDC), RS232
- Communication distance(RF Model):2.4Ghz 80m
- Sealing: IP42
- Drop Specification 1.5m

LIÊN HỆ



DS-MSH100/13U/05S/W1

Industrial Barcode Scanner

- Core processor: NPU+CPU
- Sensor GMOS Resolution 640*480
- Supplementary light & Aiming: White LED+ Orange LED Aiming
- Code type: Mainstream 1D&2D Code , Others Can be Customized
- Minimum reading accuracy: 4mil
- Reading distance :Code39 (5 mil) 50-100mm
- Code128 (10 mil) 30-240mm
- EAN13 (13 mil) 30-240mm
- Data Matrix (10 mil) 40- 130mm
- QR Code(15 mil) 15-205mm
- Interface and Protocol: USB & Serial
- Smart SDK, USB (HID,CDC), RS232
- Communication distance(RF Model):2.4Ghz 80m
- Sealing: IP42
- Drop Specification 1.5m

LIÊN HỆ



DS-MSH100/03RF/03S/W2

Industrial Barcode Scanner

- Core processor: NPU+CPU
- Sensor GMOS Resolution 1280*1024
- Supplementary light & Aiming: White LED+ Leser Aiming
- Code type: Mainstream 1D&2D Code , Others Can be Customized
- Minimum reading accuracy: 3mil
- Reading distance :Code39 (5 mil) 50-100mm
- Code128 (10 mil) 30-240mm
- EAN13 (13 mil) 30-240mm
- Data Matrix (10 mil) 40- 130mm
- QR Code(15 mil) 15-205mm
- Interface and Protocol: USB & Serial
- Smart SDK, USB (HID,CDC), RS232
- Communication distance(RF Model):2.4Ghz 80m
- Sealing: IP42
- Drop Specification 1.5m

LIÊN HỆ



DS-MSH100/03U/03S/W2

Industrial Barcode Scanner

- Core processor: NPU+CPU
- Sensor GMOS Resolution 1280*1024
- Supplementary light & Aiming: White LED+ Leser Aiming
- Code type: Mainstream 1D&2D Code , Others Can be Customized
- Minimum reading accuracy: 3mil
- Reading distance :Code39 (5 mil) 50-100mm
- Code128 (10 mil) 30-240mm
- EAN13 (13 mil) 30-240mm
- Data Matrix (10 mil) 40- 130mm
- QR Code(15 mil) 15-205mm
- Interface and Protocol: USB & Serial
- Smart SDK, USB (HID,CDC), RS232
- Communication distance(RF Model):2.4Ghz 80m
- Sealing: IP42
- Drop Specification 1.5m

LIÊN HỆ

Hikvision's UPS

Keep System Stable



Surge protection



Wide input voltage



Short switching time



LCD display



Universal sockets



USB port



Background

Trouble caused by frequent power failures



Why Choose Hikvision's UPS?



- **A trusted brand**
High control standards and product quality guaranteed
- **After-sales guarantee**
2 years warranty, 1 year battery warranty and 1 to 1 replacement
- **Reliable performance**
Long work duration

Work Duration Test		
Model	Load Power	Work Duration
DS-UPS600 (Hikvision)	22 W	3h
Other Brand	22 W	40 mins

★ Calculation formula of work duration:

Work duration=Battery voltage (V) * Battery capacity (AH) / Load power (W) * output efficiency



Backup time for different equipment					
	1 eDVR + 4 analog cameras ≈ 15W	1 DVR + 4 analog + 1 HDD ≈ 32W	1 NVR + 4 IPC + 1 switch + 1 HDD ≈ 42W	1 NVR + 8 IPC + 1 switch + 2 HDD ≈ 55W	1 Computer + 1 monitor ≈ 65W
DS-UPS600	180 mins	80 mins	65 mins	48 mins	35 mins
DS-UPS1000	280 mins	110 mins	90 mins	65 mins	50 mins
DS-UPS3000	/	/	/	315 mins	240 mins

★ Notes:

UPS backup time depends on the connected equipment's power usage which may change in different scenarios.

Application

CCTV System



Ensures no important footage is lost

Access Control System



Prevents pass failures in access control systems

Office



Prevents data loss on desktop computers

Residence



Makes sure you have a stable internet connection and smooth internet access

Retail



Power Backup for cash register

H Hikvision's UPS



DS-UPS600

Oversea UPS

- Wide input voltage range
- Built-in AVR
- Super fast charging
- Overload and short circuit protection
- Compact design

885.000



DS-UPS1000

Oversea UPS

- Wide input voltage range
- Built-in AVR
- Super fast charging
- Overload and short circuit protection
- Compact design

1.270.000



DS-UPS2000

Oversea UPS

- Wide input voltage range
- Built-in AVR
- Super fast charging
- Overload and short circuit protection
- LCD display
- Compact design
- USB port for remote control

3.720.000



DS-UPS3000

Oversea UPS

- Wide input voltage range
- Built-in AVR
- Super fast charging
- Overload and short circuit protection
- LCD display
- Compact design
- USB port for remote control

5.920.000





HIKVISION[®]

BRIDGE ANY DISTANCE

Hikvision webcam & video conference





DS-U02/320

Value Series

- 2 MP CMOS
- High quality imaging with 1920 × 1080 resolution
- Min. illumination: 0.1 Lux @ (F1.2, AGC ON)
- AGC for self-adaptive brightness
- Built-in microphone with clear sound
- Type A interface, supporting USB 2.0 protocol. Plug-and-play, no need to install driver software

900.000



DS-U02P

Value Series

- 2 MP CMOS
- High quality imaging with 1920 × 1080 resolution
- Min. illumination: 0.1 Lux @ (F1.2, AGC ON)
- AGC for self-adaptive brightness
- Built-in microphone with clear sound
- Type A interface, supporting USB 2.0 protocol. Plug-and-play, no need to install driver software
- Support auto focus

1.410.000



DS-U12/525

Value Series

- 2 MP CMOS
- High quality imaging with 1920 × 1080 resolution
- Min. illumination: 0.1 Lux @ (F1.2, AGC ON)
- AGC for self-adaptive brightness
- Built-in microphone with clear sound
- Type A interface, supporting USB 2.0 protocol. Plug-and-play, no need to install driver software

1.630.000



DS-U04

Value Series

- 4 MP CMOS
- High quality imaging with 2560 × 1440 resolution
- Min. illumination: 0.1 Lux @ (F1.2, AGC ON)
- AGC for self-adaptive brightness
- Built-in microphone with clear sound
- Type A interface, supporting USB 2.0 protocol. Plug-and-play, no need to install driver software

1.450.000



DS-U04P

Value Series

- 4 MP CMOS
- High quality imaging with 2560 × 1440 resolution
- Min. illumination: 0.1 Lux @ (F1.2, AGC ON)
- AGC for self-adaptive brightness
- Built-in microphone with clear sound
- Type A interface, supporting USB 2.0 protocol. Plug-and-play, no need to install driver software
- Support auto focus

2.130.000



DS-U18

Value Series

- 8 MP CMOS
- High quality imaging with 3840 × 2160 resolution
- Min. illumination: 0.1 Lux @ (F1.2, AGC ON)
- AGC for self-adaptive brightness
- Built-in microphone with clear sound
- Type-C interface, supporting USB 3.0 and USB 2.0 protocols. Plug-and-play, no need to install driver software

4.380.000



DS-UA12

Value Series

- 2 MP CMOS
- High quality imaging with 1920 × 1080 resolution
- Min. illumination: 0.1 Lux @ (F1.2, AGC ON)
- AGC for self-adaptive brightness
- Built-in microphone with clear sound
- Built-in speaker supports echo suppression
- Type A interface, supporting USB 3.0 protocol. Plug-and-play, no need to install driver software

1.650.000

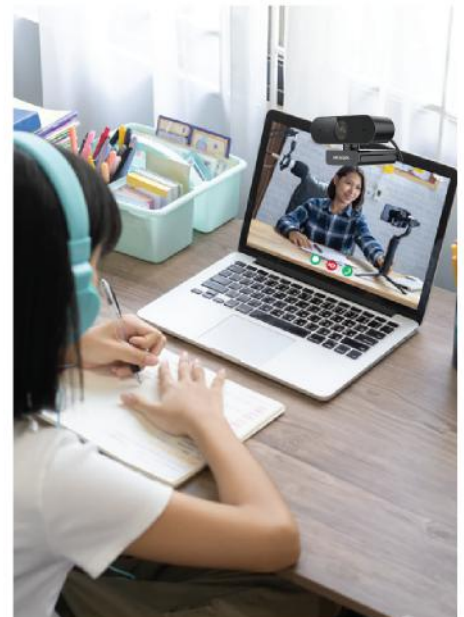


DS-UA14

European standard

- 4 MP CMOS
- High quality imaging with 2560 × 1440 resolution
- Min. illumination: 0.1 Lux @ (F1.2, AGC ON)
- Built-in microphone with clear sound
- AGC for self-adaptive brightness
- Built-in speaker supports echo suppression
- Type A interface, supporting USB 3.0 protocol. Plug-and-play, no need to install driver software

2.270.000





DS-UC2

1080P Web Camera

- High quality imaging with 1920 × 1080 resolution
- Low distortion lens for reducing image distortion
- Built-in dual-microphone with clear sound
- USB Type-C interface, supporting USB 2.0 protocols
- Plug-and-play, no need to install driver software
- Support auto focus

2.420.000



DS-UC4

2K Web Camera

- High quality imaging with 2560 × 1440 resolution
- Low distortion lens for reducing image distortion
- Built-in dual-microphone with clear sound
- USB Type-C interface, supporting USB 2.0 protocols
- Plug-and-play, no need to install driver software
- Support auto focus

3.210.000



DS-UC8

4K Web Camera

- High quality imaging with 3840 × 2160 resolution
- Low distortion lens for reducing image distortion
- Built-in dual-microphone with clear sound
- USB Type-C interface, supporting USB 3.0 protocols
- Plug-and-play, no need to install driver software
- Support auto focus

5.480.000



DS-UL2

1080P Live Camera

- High quality imaging with 1920 × 1080 resolution
- Built-in supplement light for bright imaging
- Low distortion lens for reducing image distortion
- Built-in microphone with clear sound
- Type-C interface, supporting USB 2.0 protocols
- Plug-and-play, no need to install driver software
- Support auto focus

3.540.000



DS-UL4

2K Live Camera

- High quality imaging with 2560 × 1440 resolution
- Built-in supplement light for bright imaging
- Low distortion lens for reducing image distortion
- Built-in microphone with clear sound
- Type-C interface, supporting USB 2.0 protocols
- Plug-and-play, no need to install driver software
- Support auto focus

4.110.000



DS-UL8

4K Live Camera

- High quality imaging with 3840 × 2160 resolution
- Built-in supplement light for bright imaging
- Low distortion lens for reducing image distortion
- Built-in microphone with clear sound
- Type-C interface, supporting USB 3.0 and USB 2.0 protocols
- Plug-and-play, no need to install driver software
- Support auto focus

5.320.000





DS-UVC-P12

PTZ Conference Camera - HD1080P

2MP CMOS Sensor, 0.2 Lux @ (F1.8 to 2.8, AGC ON), Built-in Mic, USB Type C, 1920 × 1080 @60 fps, PTZ, Varifocal lens, 3 to 15 mm

13.670.000



IDS-UVC-X28

AI Conference Camera - 4k

All in one design, 4k resolution, 120° wide angle, built-in 8 mics and HD speaker, support Auto frame and speaker tracking, USB Plug-and-paly, built-in privacy shutter

28.340.000



DS-UVC-X12

Conference Camera - HD1080P

2MP CMOS Sensor, 1920*1080@30/25fps, 4-mic array, built-in HD Speaker, 360° clear sound with 5 meters range, smart noise reduction, echo suppression, anti-reverberation, USB 3.0 cable connection

7.830.000



DS-UAC-S1V

speakerphone - 8-mic array - Radius of 5m

8-mic array, built-in HD Speaker, 360° clear sound with 5 meters range, steady and transient smart noise reduction, echo suppression, anti-reverberation, USB 3.0 cable connection

6.620.000



DS-UAC-S1

speakerphone - 8-mic array - Radius of 5m

" 8-mic array, built-in HD Speaker, 360° clear sound with 5 meters range, steady and transient smart noise reduction, echo suppression, anti-reverberation, Bluetooth & USB Dongle & USB 3.0 cable connection "

7.120.000



DS-UAC-M1P

Micphone - 32-mic array - Radius of 10m

32-mic array, 360° clear sound with 10 meters range, steady and transient smart noise reduction, echo suppression, anti-reverberation, network connection, PoE

12.110.000





HIKVISION[®]

HIKVISION VIETNAM

HA NOI OFFICE: 38th Floor, Keangnam Hanoi Landmark Tower, Me Tri Ward, Nam Tu Liem District, Ha Noi Capital.

HO CHI MINH OFFICE: L12A-07, L12a Floor, Vincom Center, 72 Le Thanh Ton, Ben Nghe Ward, District 1, Ho Chi Minh City.

Hotline: 1900 2810

Email: hotro@hikvision.com

Hotline: 1900 2810

HIKVISION 2024